

## MOUNTING DIMENSIONS

B-K..AM..

Fig.1

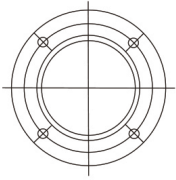
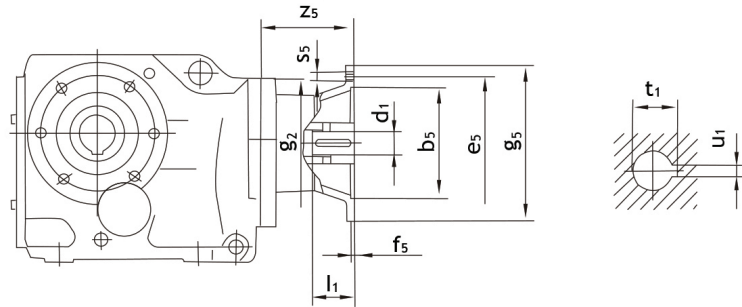
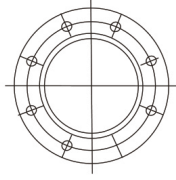


Fig.2

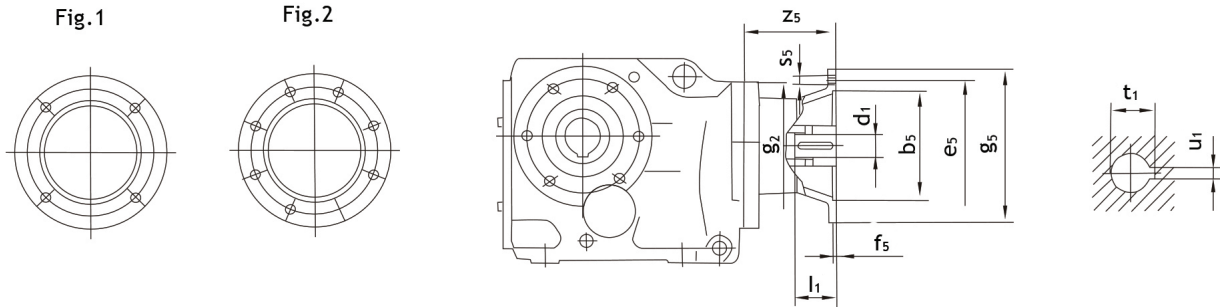


Model	Input	Fig	$b_5$	$e_5$	$f_5$	$g_2$	$g_5$	$s_5$	$z_5$	$d_1$	$l_1$	$t_1$	$u_1$					
B-K..37	AM 63	1	95	115	3.5	120	140	M8	72	11	23	12.8	4					
	AM 71 <sup>1)</sup>		110	130			160			14	30	16.3	5					
	AM 80 <sup>1)</sup>		130	165	4.5		200	M10	106	19	40	21.8	6					
	AM 90 <sup>1)</sup>									24	50	27.3	8					
B-K..47 B-K..57 B-K..67	AM 63	1	95	115	3.5	160	140	M8	66	11	23	12.8	4					
	AM 71		110	130			160			14	30	16.3	5					
	AM 80		130	165	4.5		200	M10	99	19	40	21.8	6					
	AM 90									24	50	27.3	8					
	AM 100 <sup>1)</sup>		180	215	5		250	M12	134	28	60	31.3	8					
	AM 112 <sup>1)</sup>																	
B-K..77	AM 63	1	95	115	3.5	200	140	M8	60	11	23	12.8	4					
	AM 71		110	130			160			14	30	16.3	5					
	AM 80		130	165	4.5		200	M10	92	19	40	21.8	6					
	AM 90									24	50	27.3	8					
	AM 100 <sup>1)</sup>		180	215	5		250	M12	126	28	60	31.3	8					
	AM 112 <sup>1)</sup>																	
	AM 132S <sup>1)</sup>		230	265	5		300							179	38	80	41.3	10
	AM 132M <sup>1)</sup>																	
AM 132L <sup>1)</sup>																		
B-K..87	AM 80	1	130	165	4.5	250	200	M10	87	19	40	21.8	6					
	AM 90									24	50	27.3	8					
	AM 100		180	215			250		121	28	60	31.3	8					
	AM 112																	
	AM 132S		230	265	5		300	M12	174	38	80	41.3	10					
	AM 132M																	
	AM 132L																	
	AM 160 <sup>1)</sup>		250	300	6		350	M16	232	42	110	45.3	12					
	AM 180 <sup>1)</sup>									48		51.8	14					

1) Input Flange  $d_{a1}$  may protude below foot mounting level in foot-mounted gear units.

## MOUNTING DIMENSIONS

B-K..AM..



Model	Input	Fig	$b_5$	$e_5$	$f_5$	$g_2$	$g_5$	$s_5$	$z_5$	$d_1$	$l_1$	$t_1$	$u_1$						
B-K..97	AM 100	1	180	215	5	300	250	M12	116	28	60	31.3	8						
	AM 112																		
	AM 132S																		
	AM 132M																		
	AM 132L																		
	AM 160	2	230	265	6		350	M16	227	42	110	45.3	12						
	AM 180																		
	AM 200 <sup>1)</sup>		300	350			7		400	268		55	59.3	16					
	AM 225 <sup>1)</sup>														350	400	7	450	283
B-K..107	AM 100	1	180	215	5	350	250	M12	110	28	60	31.3	8						
	AM 112																		
	AM 132S																		
	AM 132M																		
	AM 132L																		
	AM 160	2	230	265	6		350	M16	221	42	110	45.3	12						
	AM 180																		
	AM 200		300	350			7		400	262		55	59.3	16					
	AM 225														350	400	7	450	277
B-K..127	AM 132S	1	230	265	5	450	300	M12	148	38	80	41.3	10						
	AM 132M																		
	AM 132L																		
	AM 160		2	250			300		6	350		M16	206	42	110	45.3	12		
	AM 180																		
	AM 200	300		350	7		400	247		55	59.3		16						
	AM 225													350		400	7	450	262
	AM 250	450	500	7	550		336	65	140	69.4	18								
	AM 280											450	500	7	550	336	75	140	79.9
B-K..157 B-K..167 B-K..187	AM 160	1	250	300	6	550	350	M16	198	42	110	45.3	12						
	AM 180																		
	AM 200		2	300					350	7		400	239	55	59.3	16			
	AM 225	350					400				7						450	254	60
	AM 250			450					500			7							
	AM 280	450	500				7			550	328		75	140	79.9	20			

1) Input Flange  $d_{a1}$  may protrude below foot mounting level in foot-mounted gear units.