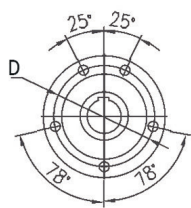
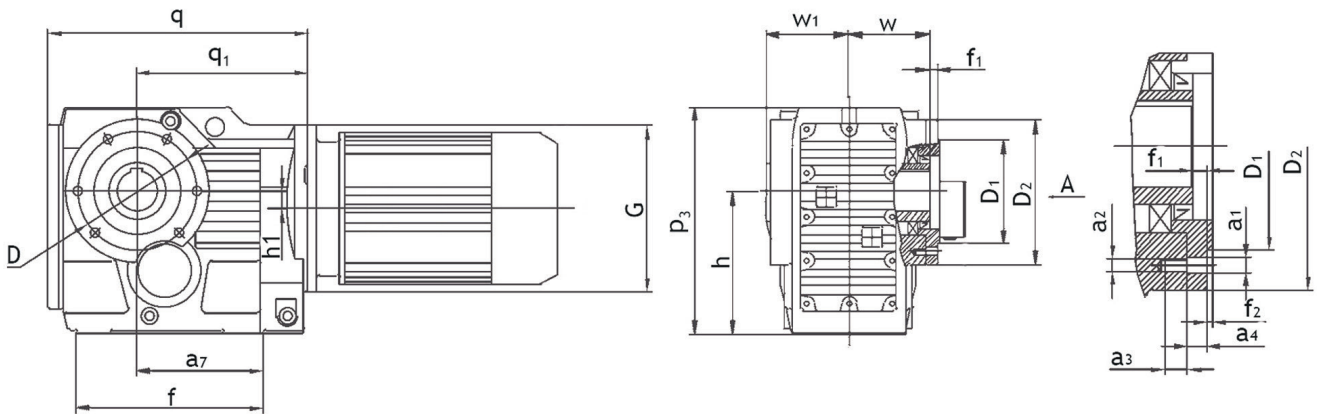
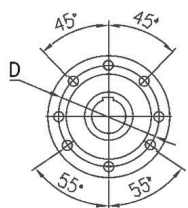


## MOUNTING DIMENSIONS

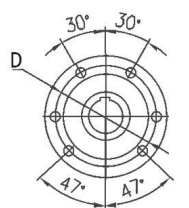
B-KAZ..37~157



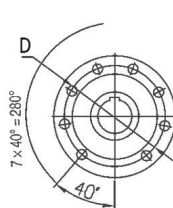
B-KAZ..37



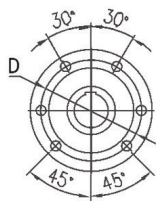
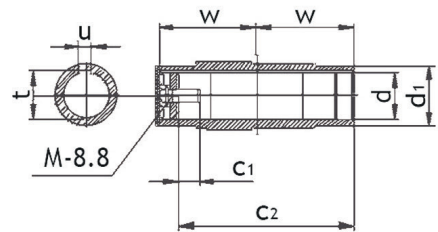
B-KAZ..47



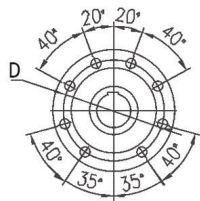
B-KAZ..57 & 67



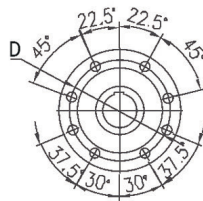
B-KAZ..77



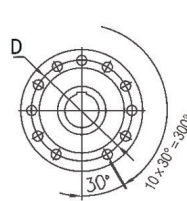
B-KAZ..87



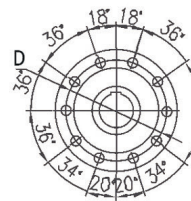
B-KAZ..97



B-KAZ..107



B-KAZ..127



B-KAZ..157

Model	q q <sub>1</sub>	D <sub>1</sub> D <sub>2</sub>	h h <sub>1</sub>	p <sub>3</sub> a <sub>7</sub>	f f <sub>1</sub>	w w <sub>1</sub>	d d <sub>1</sub>	c <sub>2</sub> c <sub>1</sub>	t u	a <sub>3</sub> a <sub>4</sub>	f <sub>2</sub> a <sub>2</sub>	a <sub>1</sub> D	G M
B-KAZ..37	210 139	Ø 80j6 Ø 110	100 <sup>-0.5</sup> 8.5	164 97	147 9	60 63	Ø 30H7 Ø 45	105 17	33.3 8	12 11.5	3 M8	Ø 9 Ø 94	Ø 120 M10x25
B-KAZ..47	243 166	Ø 80j6 Ø 120	112 <sup>-0.5</sup> 7.2	185 115	170 8.5	75 78	Ø 35H7 Ø 50	132 22	38.3 10	12 11	3 M8	Ø 9 Ø 102	Ø 160 M12x30
B-KAZ..57	269 173	Ø 105j6 Ø 155	132 <sup>-0.5</sup> 13.1	215 120	182 9	83 86	Ø 40H7 Ø 55	142 29	43.3 12	20 12	3.5 M12	Ø 13.5 Ø 125	Ø 160 M16x40
B-KAZ..67	274 179	Ø 105j6 Ø 155	140 <sup>-0.5</sup> 20	226 125	182 8.5	90 94	Ø 40H7 Ø 55	156 29	43.3 12	20 12	3.5 M12	Ø 13.5 Ø 125	Ø 160 M16x40
B-KAZ..77	312 202	Ø 125j6 Ø 170	180 <sup>-0.5</sup> 31.3	286 139	204 10	105 108	Ø 50H7 Ø 70	183 32	53.8 14	20 14	3.5 M12	Ø 13.5 Ø 142	Ø 200 M16x45
B-KAZ..87	390 257	Ø 155j6 Ø 215	212 <sup>-0.5</sup> 25.9	338 190	280 11	120 123	Ø 60H7 Ø 85	210 36	64.4 18	26 15	4 M16	Ø 17.5 Ø 178	Ø 250 M20x50
B-KAZ..97	435 277	Ø 180j6 Ø 260	265 <sup>-1.0</sup> 32.3	414 190	298 14	150 153	Ø 70H7 Ø 95	270 34	74.9 20	26 18	4 M16	Ø 17.5 Ø 220	Ø 300 M20x50
B-KAZ..107	537 341	Ø 210j6 Ø 304	315 <sup>-1.0</sup> 52	500 230	370 -8	175 178	Ø 90H7 Ø 118	313 40	95.4 25	30 22	4 M20	Ø 22 Ø 260	Ø 350 M24x60
B-KAZ..127	615 390	Ø 250h6 Ø 350	375 <sup>-1.0</sup> 53	592 288	440 0	205 208	Ø 100H7 Ø 135	373 38	106.4 28	28 30	5 M20	Ø 22 Ø 300	Ø 450 M24x60
B-KAZ..157	706 426	Ø 290h6 Ø 400	450 <sup>-1.0</sup> 71.7	705 298	480 -14	250 253	Ø 120H7 Ø 155	460 36	127.4 32	36 28	5 M24	Ø 26 Ø 340	Ø 550 M24x60