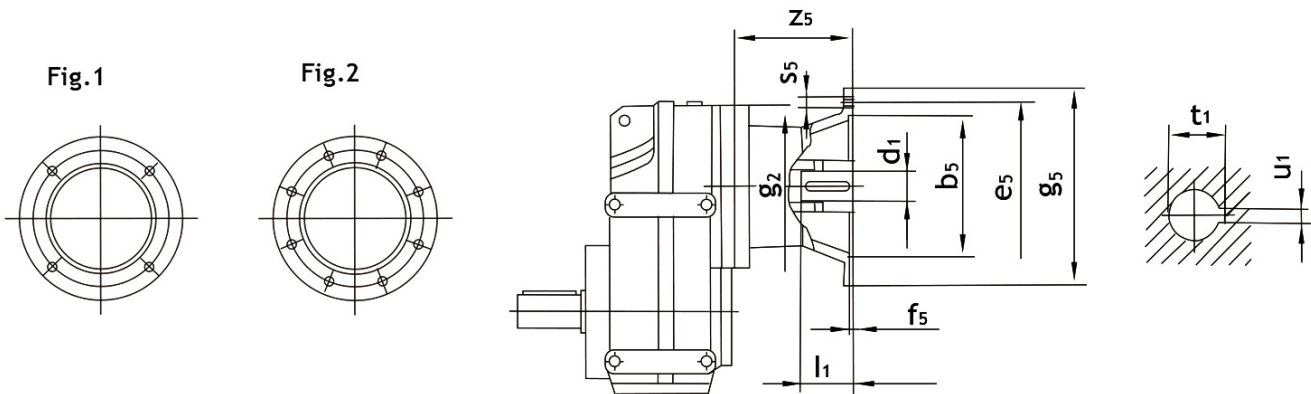


## MOUNTING DIMENSIONS

B-F..AM..



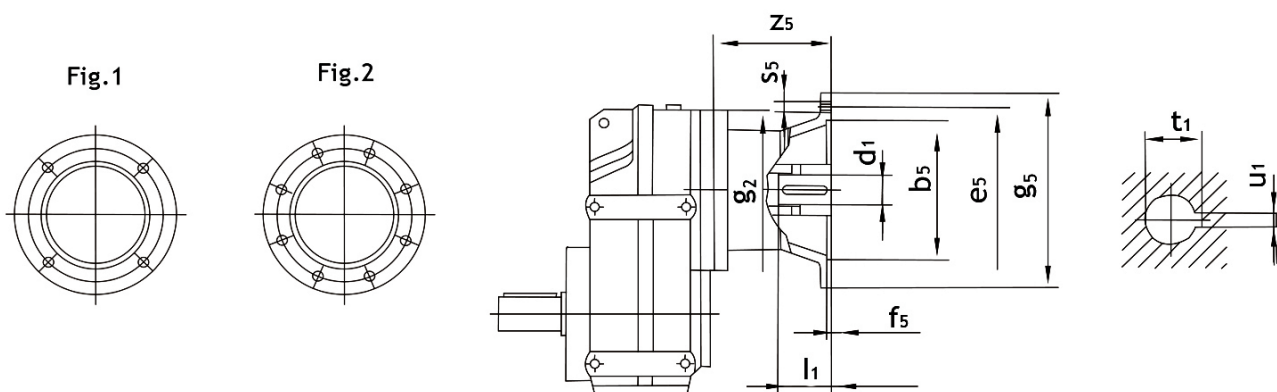
Model	Input	Fig	$b_5$	$e_5$	$f_5$	$g_2$	$g_5$	$s_5$	$z_5$	$d_1$	$l_1$	$t_1$	$u_1$
B-F..37 B-F..47	AM 63	1	95	115	3.5	120	140	M8	72	11	23	12.8	4
	AM 71 <sup>1)</sup>		110	130			14			30	16.3	5	
	AM 80 <sup>1)</sup>		130	165	4.5		200	M10	106	19	40	21.8	6
	AM 90 <sup>1)</sup>									24	50	27.3	8
B-F..57 B-F..67	AM 63	1	95	115	3.5	160	140	M8	66	11	23	12.8	4
	AM 71		110	130			14			30	16.3	5	
	AM 80		130	165	4.5		200	M10	99	19	40	21.8	6
	AM 90									24	50	27.3	8
	AM 100 <sup>1)</sup>		180	215	5		250	M12	134	28	60	31.3	8
	AM 112 <sup>1)</sup>												
B-F..77	AM 63	1	95	115	3.5	200	140	M8	60	11	23	12.8	4
	AM 71		110	130			14			30	16.3	5	
	AM 80		130	165	4.5		200	M10	92	19	40	21.8	6
	AM 90									24	50	27.3	8
	AM 100 <sup>1)</sup>		180	215	5		250	M12	126	28	60	31.3	8
	AM 112 <sup>1)</sup>												
	AM 132S <sup>1)</sup>		230	265	5		300	M12	179	38	80	41.3	10
	AM 132M <sup>1)</sup>												
AM 132L <sup>1)</sup>													
B-F..87	AM 80	1	130	165	4.5	250	200	M10	87	19	40	21.8	6
	AM 90									24	50	27.3	8
	AM 100		180	215	5		250	M12	121	28	60	31.3	8
	AM 112												
	AM 132S		230	265	5		300	M12	174	38	80	41.3	10
	AM 132M												
	AM 132L		250	300	6		350	M16	232	42	110	45.3	12
	AM 160 <sup>1)</sup>									48		51.8	14
	AM 180 <sup>1)</sup>												

1) Input Flange dai  $g_5$  may protude below foot mounting level in foot-mounted gear units.



## MOUNTING DIMENSIONS

B-F..AM..



Model	Input	Fig	$b_5$	$e_5$	$f_5$	$g_2$	$g_5$	$s_5$	$z_5$	$d_1$	$l_1$	$t_1$	$u_1$
B-F..97	AM 100	1	180	215	5	300	250	M12	116	28	60	31.3	8
	AM 112												
	AM 132S		230	265			6	350	M16	227	42	110	45.3
	AM 132M				48						51.8		
	AM 132L		250	300	7		400	M16	268	55	140	59.3	16
	AM 160									60		64.4	
	AM 180		300	350	7		450	M16	283	60	140	64.4	18
	AM 200	60				64.4							
AM 225 <sup>1)</sup>	2	350	400	7	450	M16	283	60	140	64.4	18		
B-F..107	AM 100	1	180	215	5	350	250	M12	110	28	60	31.3	8
	AM 112												
	AM 132S		230	265			6	350	M16	221	42	110	45.3
	AM 132M				48						51.8		
	AM 132L		300	350	7		400	M16	262	55	140	59.3	16
	AM 160									60		64.4	
	AM 180		300	350	7		450	M16	277	60	140	64.4	18
	AM 200	60				64.4							
AM 225	2	350	400	7	450	M16	277	60	140	64.4	18		
B-F..127	AM 132S	1	230	265	5	450	300	M12	148	38	80	41.3	10
	AM 132M												
	AM 132L		250	300			6	350	M16	206	42	110	45.3
	AM 160	48			51.8								
	AM 180	300	350	7	400		M16	247	55	140	59.3	16	
	AM 200								60		64.4		
	AM 225	350	400	7	450		M16	262	60	140	64.4	18	
	AM 250					65			69.4				
AM 280	2	450	500	7	550	M16	336	75	140	79.9	20		
B-F..157	AM 160	1	250	300	6	550	350	M16	198	42	110	45.3	12
	AM 180									48		51.8	
	AM 200		300	350			7	400	M16	239	55	110	59.3
	AM 225	350	400	7	450		M16	254	60	140	64.4	18	
	AM 250								65		69.4		
	AM 280	2	450	500	7		550	M16	328	75	140	79.9	20

1) Input Flange  $d_{ai}$  may protrude below foot mounting level in foot-mounted gear units.