

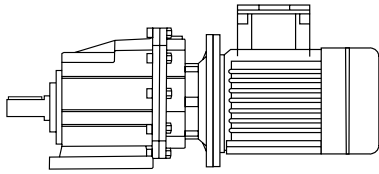
BON HELICAL GEAR BOXES

LUBRICATION

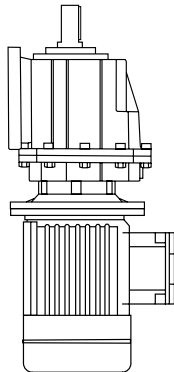
		ISO	 SHELL	 MOBIL	 BP	Lubrication type
						BON
	-20 to +25	VG 150 VG 100	Shell Omala 100	Mobilgear 627	BP Energol GR-XP 100	
	-30 to +10	VG 68-46 VG 32	Shell Tellus T 32	Mobil D.T.E. 13M		
	-40 to -20	VG 22 VG 15	Shell Tellus T 15	Mobil D.T.E. 11M	BP Energol HLP-HM 15	Syntetic oil
	-40 to +40	VG 150	Shell Omala HD 150	Mobil SHC 629		
	-40 to +40	VG 220	Shell Omala HD 150	Mobil SHC 630		
	-25 to +50	VG 320	Shell Tivela S 320			

MOUNTING POSITION

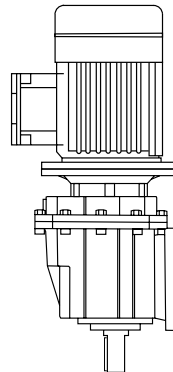
B3



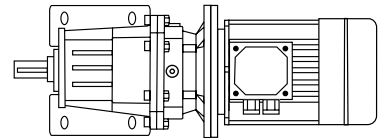
V6



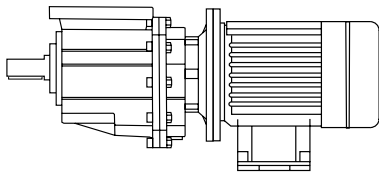
V5



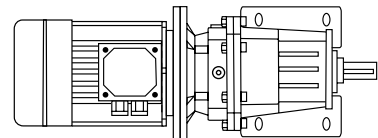
B6



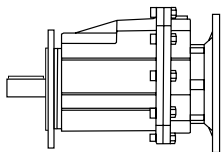
B8



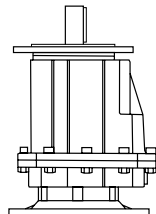
B7



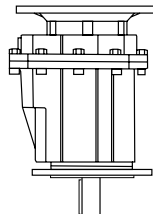
B5



V3



V1



Size	Fill quantity in litres	
	STANDARD	V6/V3
BON 20	0,4	0,6
BON 25	0,5	0,7
BON 30	0,8	1,1
BON 35	1,2	1,6

The BON gearboxes are supplied with Shell Tivela S 320 oil for STANDARD position, when mounted in V6/V3 it is necessary to add the correct quantity of oil.