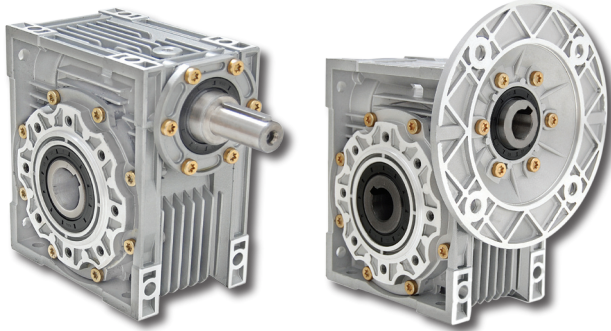
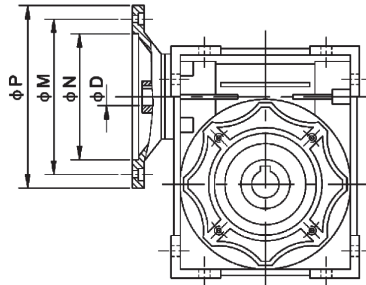


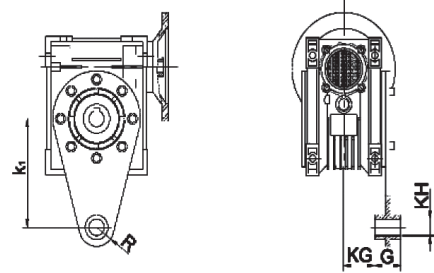
ACCESSORIES DIMENSIONS



Motor Mounting Facility



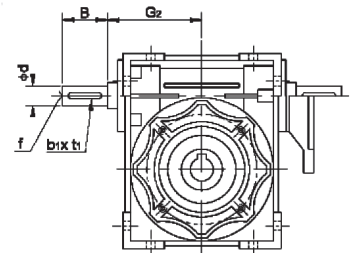
Torque Arm



Size	K ₁	G	KG	KH	R
25	70	14	17.5	8	15
30	85	14	24	8	15
40	100	14	31.5	10	18
50	100	14	38.5	10	18
63	150	14	49	10	18
75	200	25	47.5	20	30
90	200	25	57.5	20	30
110	250	30	62	25	35
130	250	30	69	25	35
150	250	30	84	25	35

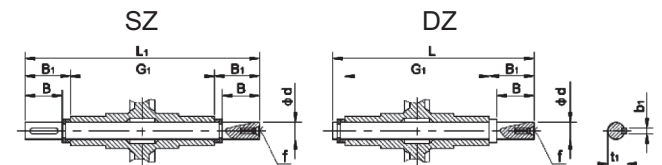
Size	PAM IEC	N	M	P	D													
					7.5	10	15	20	25	30	40	50	60	80	100			
25	56B14	50	65	80	9	9	9	9	9	9	9	9	-	-	-	-	-	-
30	63B5	95	115	140	11	11	11	11	11	11	11	11	-	-	-	-	-	-
	63B14	60	75	90	-	-	-	-	-	-	-	-	-	-	-	-	-	-
	56B5	80	100	120	9	9	9	9	9	9	9	9	9	9	-	-	-	-
	56B14	50	65	80	-	-	-	-	-	-	-	-	-	-	-	-	-	-
40	71B5	110	130	160	14	14	14	14	14	14	14	14	-	-	-	-	-	-
	71B14	70	85	105	-	-	-	-	-	-	-	-	-	-	-	-	-	-
	63B5	95	115	140	11	11	11	11	11	11	11	11	11	11	11	11	11	11
	63B14	60	75	90	-	-	-	-	-	-	-	-	-	-	-	-	-	-
50	56B5	80	100	120	-	-	-	-	-	-	-	-	9	9	9	9	-	-
	80B5	130	165	200	19	19	19	19	19	19	-	-	-	-	-	-	-	-
	80B14	80	100	120	-	-	-	-	-	-	-	-	-	-	-	-	-	-
	71B5	110	130	160	14	14	14	14	14	14	14	14	14	14	-	-	-	-
	71B14	70	85	105	-	-	-	-	-	-	-	-	-	-	-	-	-	-
63	90B5	130	165	200	24	24	24	24	24	24	-	-	-	-	-	-	-	-
	90B14	95	115	140	-	-	-	-	-	-	-	-	-	-	-	-	-	-
	80B5	130	165	200	19	19	19	19	19	19	19	19	19	-	-	-	-	-
	80B14	80	100	120	-	-	-	-	-	-	-	-	-	-	-	-	-	-
	71B5	110	130	160	-	-	-	-	-	-	-	-	-	-	-	-	-	-
	71B14	70	85	105	-	-	-	-	-	-	-	-	-	-	-	-	-	-
75	100/112B5	180	215	250	28	28	28	-	-	-	-	-	-	-	-	-	-	-
	100/112B14	110	130	160	-	-	-	-	-	-	-	-	-	-	-	-	-	-
	90B5	130	165	200	24	24	24	24	24	24	-	-	-	-	-	-	-	-
	90B14	95	115	140	-	-	-	-	-	-	-	-	-	-	-	-	-	-
	80B5	130	165	200	-	-	-	19	19	19	19	19	19	19	19	19	19	19
	80B14	80	100	120	-	-	-	-	-	-	-	-	-	-	-	-	-	-
90	71B5	110	130	160	-	-	-	-	-	-	-	-	-	-	-	-	-	-
	100/112B5	180	215	250	28	28	28	28	28	28	-	-	-	-	-	-	-	-
	100/112B14	110	130	160	-	-	-	-	-	-	-	-	-	-	-	-	-	-
	90B5	130	165	200	24	24	24	24	24	24	24	24	24	-	-	-	-	-
	90B14	95	115	140	-	-	-	-	-	-	-	-	-	-	-	-	-	-
	80B5	130	165	200	-	-	-	-	-	-	-	-	-	19	19	19	19	19
110	80B14	80	100	120	-	-	-	-	-	-	-	-	-	-	-	-	-	-
	132B5	230	265	300	38	38	38	38	38	38	38	38	-	-	-	-	-	-
	100/112B5	180	215	250	28	28	28	28	28	28	28	28	-	-	-	-	-	-
	90B5	130	165	200	-	-	-	-	-	-	-	-	-	24	24	24	24	24
	80B5	130	165	200	-	-	-	-	-	-	-	-	-	-	-	-	-	19
130	132B5	230	265	300	38	38	38	38	38	38	38	38	-	-	-	-	-	-
	100/112B5	180	215	250	-	-	-	-	-	-	-	-	-	28	28	28	28	28
	90B5	130	165	200	-	-	-	-	-	-	-	-	-	-	-	-	-	24
150	160B5	250	300	350	42	42	42	42	-	-	-	-	-	-	-	-	-	-
	132B5	230	265	300	-	-	-	-	-	-	-	-	-	-	-	-	-	-
	100/112B5	180	215	250	-	-	-	-	-	-	-	-	-	-	-	-	-	28

Double Worm Shaft



Size	G _z	d (j6)	B	f	b ₁	t ₁
30	45	9	20	-	3	10.2
40	53	11	23	-	4	12.5
50	64	14	30	M6	5	16
63	75	19	40	M6	6	21.5
75	90	24	50	M8	8	27
90	108	24	50	M8	8	27
110	135	28	60	M10	8	31
130	155	30	80	M10	8	33
150	175	35	80	M12	10	38

Sizes of Single(DZ) & Double(SZ) Output Shaft



Size	d (h6)	B	B ₁	G ₁	L	L ₁	f	b ₁	t ₁
25	11	23	25.5	50	81	101	-	4	12.5
30	14	30	32.5	63	102	128	M6	5	16
40	18	40	43	78	128	164	M6	6	20.5
50	25	50	53.5	92	153	199	M10	8	28
63	25	50	53.5	112	173	219	M10	8	28
75	28	60	63.5	120	192	247	M10	8	31
90	35	80	84.5	140	234	309	M12	10	38
110	42	80	84.5	155	249	324	M16	12	45
130	45	80	85	170	265	340	M16	14	48.5
150	50	82	87	200	297	374	M16	14	53.5